

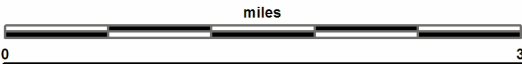
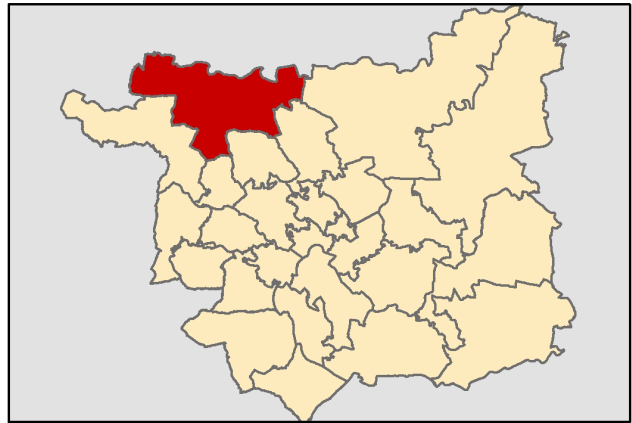
Otley/Pool/Bramhope

This report was produced by the Children's Performance Service on 01/06/2012. The information in these overviews are based on the cluster data profile version 5.12.

For more information telephone 0113 39 50701 or email educ.pmi@leeds.gov.uk or visit:

www.leedsinitiative.org/ClusterDataProfile.aspx

The map to the right gives the position of the cluster in Leeds. The map below shows the location of the Children's Centres, Primary and Secondary Schools in the cluster.



Map Key: Otley/Pool/Bramhope

1 - Children's Centre/s

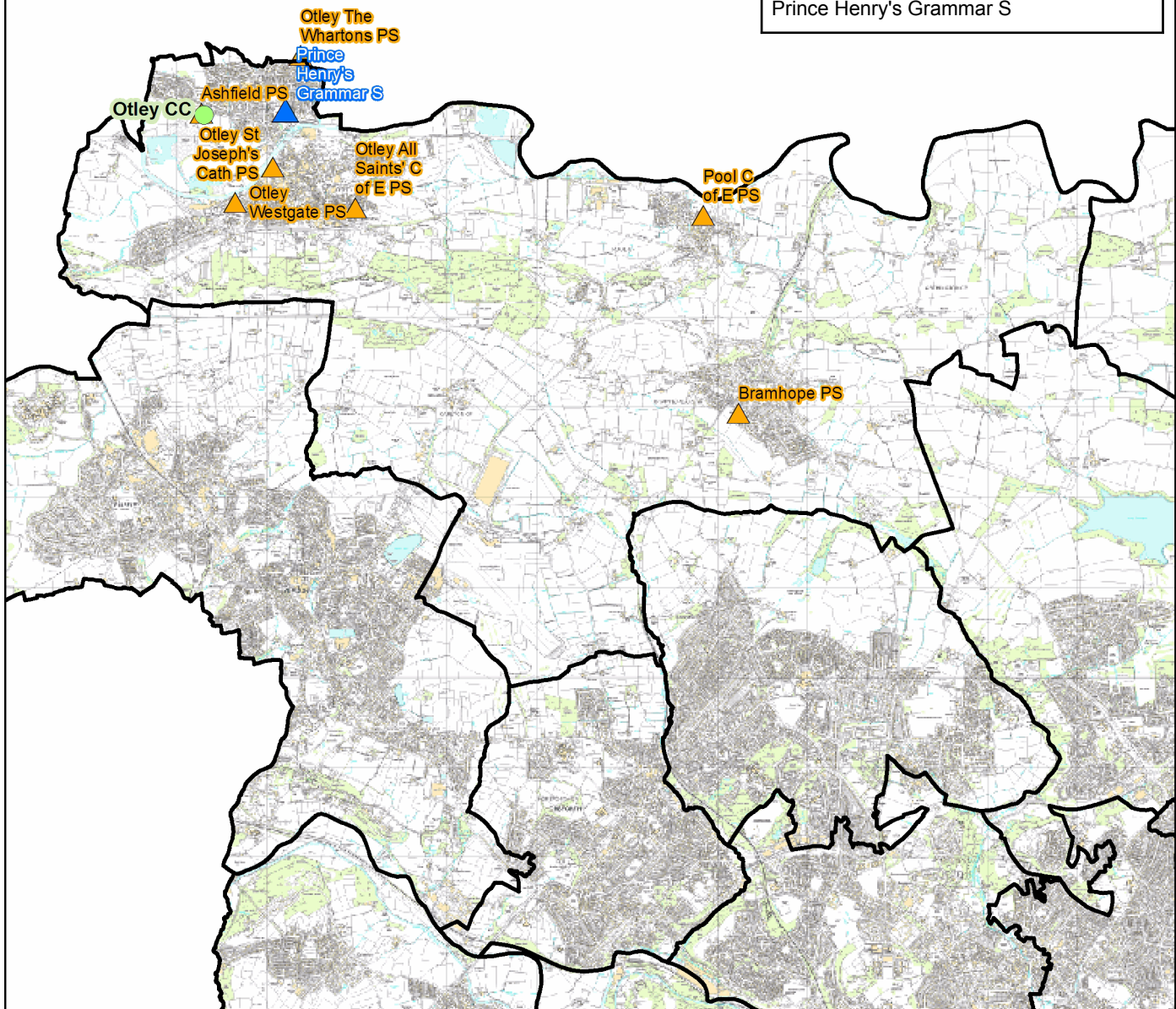
Otley

7 - Primary School/s

Ashfield PS
Bramhope PS
Otley All Saints' C of E PS
Otley St Joseph's Cath PS
Otley The Whartons PS
Otley Westgate PS
Pool C of E PS

1 - Secondary School/s

Prince Henry's Grammar S



Cluster Overviews key**Data Period:**

The codes in the key to the right are for the time periods that the data in these reports cover. They will appear next to all data sets.

Academic Year

Calendar Year

Financial Year

Snapshot

Other

DP:A**DP:C****DP:F****DP:S****DP:O****Cluster Overview**

Data Source: January School Census					DP: S
Primary Schools	DFE	Total Number on roll			
		2010	2011	2012	
Bramhope Primary School	2406	253	266	262	
Otley All Saints' C of E Primary School	2513	239	244	256	
Otley Ashfield Primary School	2401	197	205	201	
Otley The Whartons Primary School	2405	204	201	205	
Pool C of E Primary School	3051	201	203	203	
St Joseph's Catholic PS Otley	3360	191	192	192	
Westgate Primary School	2403	252	259	256	
Total		1537	1570	1575	

Data Source: January School Census					DP: S
Secondary Schools	DFE	Total Number on roll			
		2010	2011	2012	
Prince Henry's Grammar School	4501	1425	1434	1431	
Total		1425	1434	1431	

Data Source: Children's Services - Feb 2012		DP: S
Children's Centre reach area registration for families of children aged 0-5	% Registered	
Cluster	58.97	
Wedge	53.88	
Leeds all	60.23	

Data Source: Children's Services	
Children's Centre	Ofsted ID
Otley	

Data Source: The office of National Statistics population mid-year estimates									DP: S
Population Estimates	0-15			Working Age			60/65+		
	2008	2009	2010	2008	2009	2010	2008	2009	2010
Cluster	3766	3745	3705	12927	12947	12981	4819	4925	5088
Wedge	44108	44366	44774	207876	208717	211509	47163	47875	48413
Leeds all	132741	133396	134493	516578	522769	531036	129937	131536	133240

Data Source: NHS Leeds													DP: S
Under Fives	September 2010						September 2011						
	0-1	1-2	2-3	3-4	4-5	Total	0-1	1-2	2-3	3-4	4-5	Total	
Cluster	216	215	227	224	207	1089	203	223	230	229	236	1121	
Wedge	3318	3278	3014	3023	2870	15503	3376	3315	3236	3035	3102	16064	
Leeds all	10202	9848	9478	9195	9113	47836	9996	10173	9787	9438	9319	48713	

Data Source: January School Census											DP: S	
Percentage of pupils who are:	Black and Minority Ethnic			English as an Additional Language			Free School Meal Eligible			Special Education Needs		
	2010	2011	2012	2010	2011	2012	2010	2011	2012	2010	2011	2012
Primary												
Cluster school	5.2	6.0	6.9	2.5	3.3	2.8	7.4	8.7	8.3	13.7	12.9	13.0
Cluster residence	5.1	5.7	6.1	2.3	3.1	2.5	7.4	9.1	8.6	13.8	12.9	13.4
Wedge school	19.3	20.7	22.2	13.3	14.0	14.3	18.7	19.7	19.4	15.1	15.3	15.6
Total primary	23.6	24.8	26.4	15.8	16.5	17.1	21.5	22.2	22.0	17.8	17.8	17.4
Secondary												
Cluster school	7.6	7.0	7.5	3.2	2.9	2.9	5.7	5.3	5.7	11.6	11.9	11.9
Cluster residence	4.3	4.1	4.3	1.4	1.3	1.5	5.7	6.5	5.9	14.2	14.5	14.8
Wedge school	15.7	16.1	16.7	9.6	9.8	10.2	16.0	16.3	16.5	19.2	17.8	14.6
Total secondary	18.6	19.4	20.4	10.4	10.0	11.1	19.0	19.4	19.5	21.4	20.4	19.0
Leeds all	21.4	22.5	23.9	13.4	13.7	14.6	20.6	21.1	21.1	20.0	19.6	18.7

Data Source: HM Revenue and Customs - taken on 31st August 2007-2009										DP: S
Child Poverty	Number of children (under 16) in families in receipt of CTC or IS/JSA			Number of children (all ages) in families in receipt of CTC or IS/JSA			Number of children in poverty, by age of youngest child, 2009			
	2007	2008	2009	2007	2008	2009	0-4	5-10	11-15	16-19
Cluster	250	245	295	290	280	350	175	100	50	25
Wedge	8010	7990	8415	8935	8950	9465	4915	2700	1460	390
Leeds all	30235	29700	31030	33690	33300	34965	18720	9640	5115	1490

Data Source: Children's Services - Summer Term 2011					DP: S	
Nursery Education Grant Claims	Number of eligible children	Number of: Claims by childcare setting			Resident Claims	Non Resident Claims
Cluster	361		285		254	31
Leeds all	14500		13851		9704	4148

Data Source: January School Census and 2010 Index of Multiple Deprivation										DP: S
IMD	% of pupils resident in most deprived areas	3% most deprived			10% most deprived			20% most deprived		
		10	11	12	10	11	12	10	11	12
Primary										
Cluster school		0.0	0.0	0.0	0.1	0.1	0.1	0.5	0.5	0.4
Cluster residence		0.0	0.0	0.0	0.0	0.0	0.0	0.0	0.0	0.0
Wedge school		1.5	2.8	2.5	15.6	15.0	15.1	26.8	27.6	27.8
Total primary		8.2	8.4	8.3	28.1	27.1	27.3	36.6	37.6	38.0
Secondary										
Cluster school		0.4	0.7	0.6	0.9	1.0	0.9	2.1	2.4	2.1
Cluster residence		0.0	0.0	0.0	0.0	0.0	0.0	0.0	0.0	0.0
Wedge school		2.6	3.1	2.9	15.0	14.2	14.0	24.6	25.0	24.7
Total secondary		7.0	7.5	7.6	24.0	23.5	23.8	32.3	33.5	33.6
Leeds all		7.7	8.0	8.0	26.4	25.7	25.9	34.8	35.9	36.2

Data Source: January School Census and CACI ACORN											DP: S
KEY: Wealther Achievers(WA), Urban Prosperity (UP), Comfortably Off (CO), Moderate Means (MM), Hard Pressed (HP)											
Percentage of pupils in each ACORN category	2011					2012					
	WA	UP	CO	MM	HP	WA	UP	CO	MM	HP	
Primary											
Cluster school	32.5	4.5	39.2	4.1	19.0	32.1	4.1	40.6	4.6	18.0	
Cluster residence	32.1	4.5	40.0	4.1	19.3	31.9	4.0	41.3	4.4	18.0	
Wedge school	14.6	8.0	31.3	13.0	32.3	14.2	8.2	31.5	13.0	32.2	
Total primary	15.4	5.9	27.8	15.8	34.3	15.0	6.0	27.7	15.9	34.6	
Secondary											
Cluster school	37.0	6.5	34.2	5.6	15.8	37.6	5.9	35.2	5.0	15.3	
Cluster residence	32.1	5.4	38.8	5.7	18.0	31.6	5.4	40.2	4.8	18.0	
Wedge school	18.4	7.0	32.6	12.6	28.8	18.4	7.1	32.8	12.7	28.4	
Total secondary	17.1	5.2	29.7	14.7	32.5	16.9	5.3	29.8	14.7	32.6	
Leeds all	16.1	5.6	28.5	15.4	33.6	15.8	5.7	28.5	15.4	33.8	

Data Source: DWP information Directorate													DP: F
KEY: Job Seekers Allowance (JSA), Incapacity Benefit (IB), Lone Parent Benefit (LPB), Total Out of Work (TOW)													
Unemployment Percentage of working age people in receipt of:	2009				2010				2011				
	JSA	IB	LPB	TOW	JSA	IB	LPB	TOW	JSA	IB	LPB	TOW	
Cluster	2.1	3.5	0.6	6.4	1.9	3.4	0.6	6.3	1.8	3.4	0.5	6.1	
Wedge	3.5	4.7	1.2	9.8	3.4	4.7	1.2	9.7	3.4	4.7	1.0	9.5	
Leeds all	4.4	5.9	1.8	12.6	4.3	5.8	1.7	12.3	4.2	5.8	1.5	12.1	

Data Source: AXCIOM Lifestyle Survey 2009-2011													DP: S					
	Property type by %									Length of residence by %								
	Owned			Rented - Council			Rented - Private			Less than 1 year			2-5 years			More than 5 years		
	09	10	11	09	10	11	09	10	11	09	10	11	09	10	11	09	10	11
Cluster	77.4	77.4	17.9	13.2	13.1	71.9	9.5	9.5	0.1	3.7	4.7	3.1	17.7	17.8	21.9	78.6	77.5	75.1
Wedge	62.9	62.8	34.8	21.7	21.6	71.9	15.4	15.6	0.0	9.4	10.7	6.1	20.6	20.6	18.3	70.0	68.7	75.5
Leeds all	61.5	61.6	39.0	24.0	23.9	61.2	14.5	14.6	0.0	7.9	8.1	5.1	20.3	20.0	18.5	71.9	71.9	76.4
Income by %	<10k			10-20k			20-30k			30-40k			40-50k			50k+		
	09	10	11	09	10	11	09	10	11	09	10	11	09	10	11	09	10	11
Cluster	16	13	16	18	24	25	18	20	13	10	17	20	13	7	11	26	20	15
Wedge	20	17	18	21	20	22	16	16	15	15	17	18	14	11	13	15	19	14
Leeds all	20	18	18	21	20	23	16	15	16	15	18	17	14	13	13	14	16	14
Struggling with payments by %	Food						Bills			Mortgage								
	09		10		11		09	10	11	09		10		11				
Cluster	10.1		8.9		2.5		8.6	11.3	6.4	1.6		1.4		2.2				
Wedge	15.4		11.1		6.2		15.2	12.6	7.5	1.7		2.0		1.6				
Leeds all	15.9		10.8		6.4		16.3	13.0	8.3	2.2		2.2		1.7				

Being Healthy

Data Source: NHS Leeds										DP: Various - Listed with each report						
Birth Data	3 year rolling average of births below 2.5kg						Number and rate of conceptions per 1000 15-17 year olds									
	% low birth weight babies						Number			Rate						
	2006-08		2007-09		2008-10		June to May		2008-09		2009-10		2008-09		2009-10	
Cluster	5.4		4.8		4.2		Cluster		18		13		22		16	
Wedge	7.1		7.1		6.8		Wedge		380		355		41		40	
Leeds all	7.8		7.8		7.6		Leeds all		1220		1145		45		43	
DP: C	% of women receiving a health and social care needs assessment at 12 weeks as a percentage of live births in the same year						DP: F	% Initiating breastfeeding April to March			% breastfeeding at 6 weeks April to March					
	2009		2010		2011			2009-10		2010-11		2009-10		2010-11		
Cluster	78.7		85.5		89.1		80.3		79.8		53.2		50.0			
Wedge	83.7		85.7		85.3		69.6		68.0		42.2		40.1			
Leeds all	81.6		82.9		84.0		67.6		65.1		40.4		39.3			
DP: C	Number of emergency admissions by age group 2007-11						Number of emergency admissions to hospital for injury, poisoning and certain other consequences of external causes by age group									
	0-4		5-10		11-18		0-4		5-10		11-18					
Cluster	603		167		355		69		48		158					
Wedge	9185		2518		6030		1108		809		2250					
Leeds all	29793		8247		18194		3419		2522		6711					
Immunisation Data	% of 2 year olds receiving vaccinations in quarter 3 for:						% of 5 year olds receiving vaccinations in quarter 3 for:									
	Diphtheria			MMR			Diphtheria			MMR						
	09-10	10-11	11-12	09-10	10-11	11-12	09-10	10-11	11-12	09-10	10-11	11-12				
Cluster	100	98	100	89	95	98	97	96	98	94	90	98				
Wedge	97	97	98	88	90	95	95	93	96	93	90	94				
Leeds all	96	96	97	86	88	94	95	94	96	91	91	95				

Data Source: National Child Measurement Programme												DP: A		
Obesity	Obesity in Reception						Obesity in Year 6							
	% Obese			% Obese or overweight			% Obese			% Obese or overweight				
	08-09	09-10	10-11	08-09	09-10	10-11	08-09	09-10	10-11	08-09	09-10	10-11		
Cluster	5.1	5.7	5.8	18.4	21.5	20.7	17.3	15.9	16.0	31.7	31.7	31.2		
Wedge	9.6	10.0	9.4	23.0	24.4	23.1	20.6	20.2	18.7	34.2	33.9	32.7		
Leeds all	9.4	10.2	9.7	21.7	23.7	23.4	20.3	20.7	20.0	34.3	35.1	34.3		
Obesity	Obesity in Reception						Obesity in Year 6							
	3 year average 2008-2011						3 year average 2008-2011							
	% Obese			% Obese or overweight			% Obese			% Obese or overweight				
Cluster	5.55			20.24			16.33			31.51				
Wedge	9.66			23.49			19.88			33.66				
Leeds all	9.77			22.96			20.32			34.56				

Stay Safe

Data Source: Children's Services					DP: Various - Listed with each report					
Number of LAC and Child protection plans	The number of children and young people looked after by the Local Authority - March				The number of children with child protection plans - March					
	based on home address before coming into care				based on placement address					
	DP: S	2011	2012		2012	2011	2012	DP: S		
Cluster	12	12		17	6	5				
Wedge	0	411		326	0	379				
Leeds all	1439	1454		1454	947	1019				
Number of Common Assessments (CAFs)				Social Care			Social Care Referrals		Requests for Service	
DP: C	2008	2009	2010	2011	DP:A	2009	2010	2011	DP:S	Feb 11 - Jan 12
Cluster	7	16	17	13	Cluster	200	172	167		368
Wedge	140	243	312	278	Wedge	3813	3622	3852		8460
Leeds all	457	849	1115	892	Leeds all	14248	13784	14000		30539
Number of Child and Adolescent Mental Health Services referrals										
DP: S	aged 11 and under				aged 12-18				total referrals	
September-October	2009-10		2010-11		2009-10		2010-11		2009-10	2010-11
Cluster	25		23		72		52		97	75
Wedge	512		362		1054		588		1566	950
Leeds all	1767		1124		2976		1730		4743	2854

Make a positive Contribution

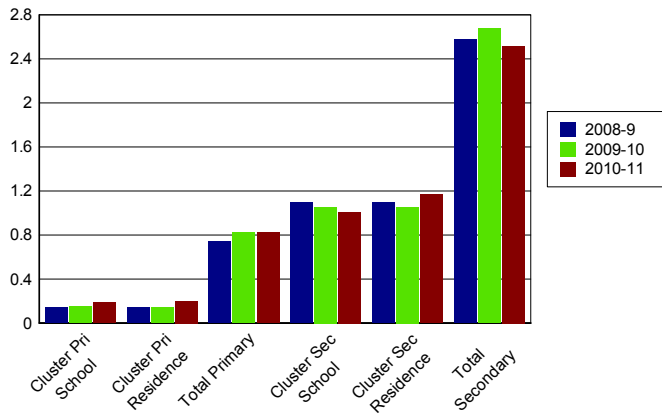
Data Source: West Yorkshire Police										DP: C
Property Crime	Burglary dwelling		Burglary elsewhere		Criminal damage		Robbery		Vehicle crime	
	10	11	10	11	10	11	10	11	10	11
Cluster	106	105	108	146	189	135			107	183
Wedge	4156	4057	2127	2015	4299	3249	379	413	2945	2637
Leeds all	9508	8487	5681	5408	13599	10426	1297	1226	9168	7971
Personal Crime					Drug Offences		Theft from person		Violent crime	
					10	11	10	11	10	11
Cluster					15	43	19	18	157	121
Wedge					187	934	290	525	2966	2712
Leeds all					1248	3192	2235	3034	11233	10896
Domestic Violence Incidents	Number of incidents recorded with a domestic qualifier or disposition code on the Storm WYP incident recording system - 2011									
Cluster	179									
Wedge	3695									
Leeds all	14525									

Data Source: Youth Offending Service										DP: A
Youth Offending	Number of Offenders					Number of Offences				
	07-08	08-09	09-10	10-11		07-08	08-09	09-10	10-11	
Cluster	38	22	23	23		86	74	75	68	
Wedge	627	474	334	355		1616	1031	732	785	
Leeds all	2741	2166	1522	1511		6331	4883	3134	3150	
April 2010 - March 2011 Number of offences by young offenders										
	Burglary	Breaches	Criminal Damage	Drugs Offences	Motoring and Vehicle	Other	Public Order	Theft and handling	Violence against the person	
Cluster	7	6	6	5	10	SUPP	SUPP	6	24	
Wedge	96	68	86	50	62	67	58	171	127	
Leeds all	291	270	328	204	218	358	282	612	587	

Data Source: School Census													DP: A
Attendance and persistent absence by percentage	Attendance			Authorised Absence			Unauthorised Absence			Persistent Absence 15%			
	08-09	09-10	10-11	08-09	09-10	10-11	08-09	09-10	10-11	08-09	09-10	10-11	
Primary													
Cluster school	96	96	96	4	4	4	0.1	0.2	0.2	1.8	1.4	1.4	
Cluster residence	96	96	96	4	4	4	0.1	0.1	0.2	1.7	1.2	1.4	
Total primary	94	94	95	5	5	4	0.7	0.8	0.8	5.9	5.5	4.3	
Secondary													
Cluster school	94	94	95	5	5	4	1.1	1.1	1.0	7.4	7.3	4.4	
Cluster residence	93	93	94	6	6	5	1.1	1.1	1.2	8.0	7.7	5.2	
Total secondary	92	92	92	6	6	5	2.6	2.7	2.5	13.0	13.1	11.2	

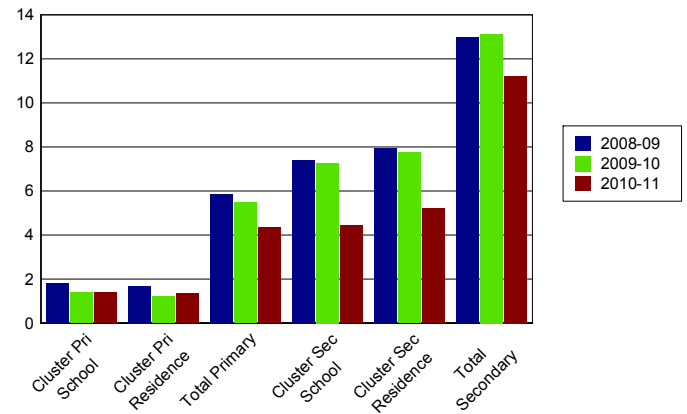
% Unauthorised Absence

2008-2011



% Persistent Absence

by 15% measure 2008-2011



Data Source: Children's Services													DP: A
Exclusions	Fixed Term Exclusions						Permanent Exclusions						
	Number			Rate per thousand			Number			Rate per thousand			
Primary	08-09	09-10	10-11	08-09	09-10	10-11	08-09	09-10	10-11	08-09	09-10	10-11	
Cluster school	5	4	5	3.3	2.6	3.2	0	0	0	0.0	0.0	0.0	
Cluster residence	8	3	3	4.4	1.7	1.7	0	0	0	0.0	0.0	0.0	
Total primary	467	371	455	7.7	6.0	7.3	2	2	2	0.0	0.0	0.0	
Secondary													
Cluster school	86	116	138	60.9	81.4	96.2	0	2	2	0.0	1.4	1.4	
Cluster residence	110	127	176	119.8	134.2	183.5	0	2	1	0.0	2.1	1.0	
Total secondary	4350	4286	3806	93.6	93.1	83.2	52	57	44	1.1	1.2	1.0	

Enjoy and Achieve

Data Source: Keypas and DFE performance tables
DP: A
Foundation Stage Profile Data The percentage of pupils achieving a good level of development (78+ points overall and 6+ points in all PSE and CCL strands)

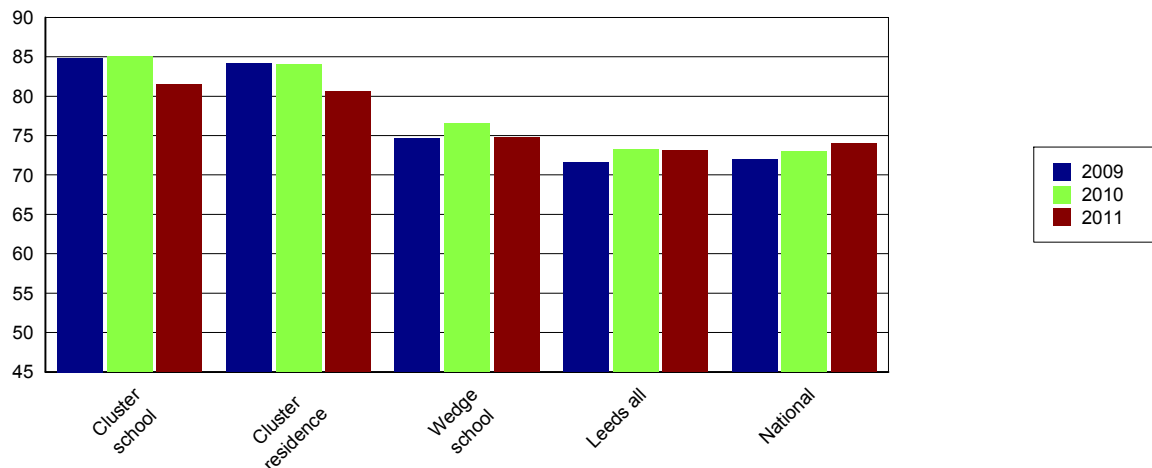
	2008	2009	2010	2011
Cluster school	62	65	61	72
Cluster residence	63	65	59	73
Leeds all	47	51	53	58

KS2 Data DP: A	English 4+			English 5+			Maths 4+			Maths 5+			English & Maths 4+		
	09	10	11	09	10	11	09	10	11	09	10	11	09	10	11
Cluster school	90	88	87	47	46	40	87	90	88	48	44	46	85	85	82
Cluster residence	89	88	88	48	44	38	86	89	85	50	45	45	84	84	81
Wedge school	83	82	83	32	34	30	80	82	80	33	33	35	75	77	75
Leeds all	79	79	81	28	31	32	77	79	78	33	31	32	72	73	73
National	80	80	82	29	33	29	79	79	80	35	34	35	72	73	74

KS2 Data - Expected progress	Made 2 levels of progress in English		Made 2 levels of progress in Maths	
	Number of pupils	Percentage	Number of pupils	Percentage
Cluster school	161	84.3	168	88.0
Wedge school	2174	88.1	2092	84.7
Leeds all	6334	88.6	6087	85.0
National		84.0		83.0

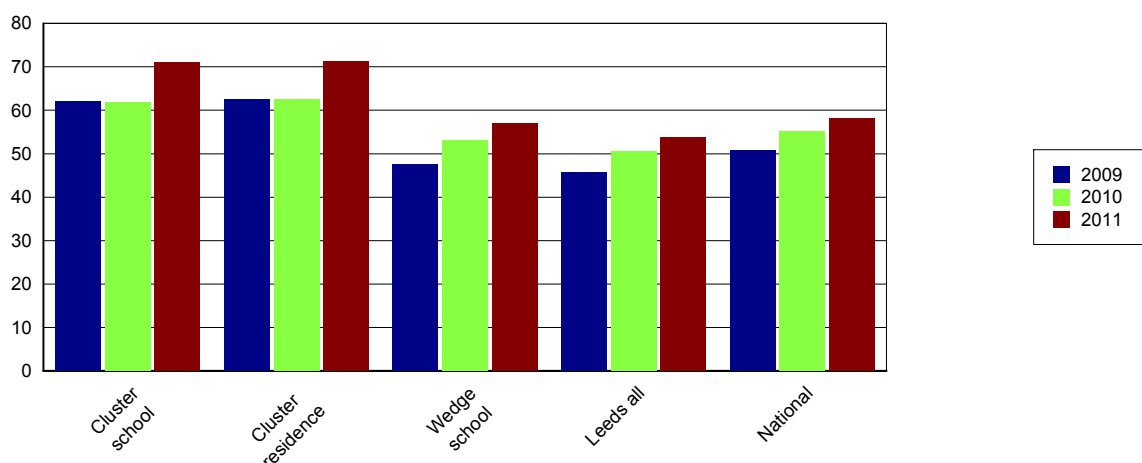
Percentage of English and Maths

Level 4+



Data Source: EPAS and DFE performance tables											DP: A		
The results are for GCSE & equivalent qualifications. The calculation of achieving no qualifications includes all qualifications													
KS4 Data	% of 5+ A*-C			% of 5+ A*-C inc Eng & Maths			% English Baccalaureate	% of 5+ A*-G			% achieving no qualifications		
	09	10	11	09	10	11		11	09	10	11	09	10
Cluster school	83	85	89	62	62	71	39	97	97	99	0		
Cluster residence	81	87	88	62	63	71	36	95	98	98	1	0	1
Wedge school	68	75	81	47	53	57	19	92	94	96	1	1	1
Leeds all	67	76	82	46	51	54	13	91	94	94	2	2	1
National	70	76	81	51	55	58	15	94	95	95		1	1

Percentage 5 A*-C Including English and Maths



Achieve Economic Well Being

Key: Not in Employment, Education or Training (NEET), In Employment, Education or Training (EET), in Full time Education (FE)													
Data Source: November destination survey													DP: S
NEET/FE		Number of NEET			% NEET			Number of FE			% FE		
		2009	2010	2011	2009	2010	2011	2009	2010	2011	2009	2010	2011
Cluster school	Year 11	11	SUPP	5	5	SUPP	2	202	212	192	89	94	94
	Year 12	SUPP	SUPP	SUPP	SUPP	SUPP	SUPP	126	164	148	98	97	94
	Year 13	SUPP	6	SUPP	SUPP	5	SUPP	107	97	138	78	79	91
Cluster residence	Year 11	13	SUPP	SUPP	6	SUPP	SUPP	191	196	182	87	94	94
	Year 12	SUPP	SUPP	SUPP	SUPP	SUPP	SUPP	123	137	113	98	98	96
	Year 13	SUPP	5	SUPP	SUPP	4	SUPP	89	94	117	80	79	89
Leeds all	Year 11	646	393	357	8	5	5	6703	7194	6564	80	87	87
	Year 12	132	67	115	3	2	3	3436	3476	3550	90	93	93
	Year 13	121	135	120	5	4	4	2067	2350	2593	78	76	84

Data Source: Integrated Youth Support Service										DP: O
16-18 NEET and EET Nov 2011 to Jan 2012	NEET		EET		Not Known		Other Activity			
	Number	%	Number	%	Number	%	Number	%		
Cluster	17	2.8	585	96.1	SUPP	SUPP	SUPP	SUPP		
Wedge	452	6.1	6860	93.0	104	1.4	21	0.3		
Leeds all	1538	7.0	20170	91.7	343	1.6	58	0.3		

Please Note: Leeds totals for 16-18 NEET will not match publicised totals as published totals include a proportion of those whose status has expired